

3RA Fuseless Load Feeders

Direct-On-Line Starters, Reversing Starters, Accessories and Infeed System

Project planning aids

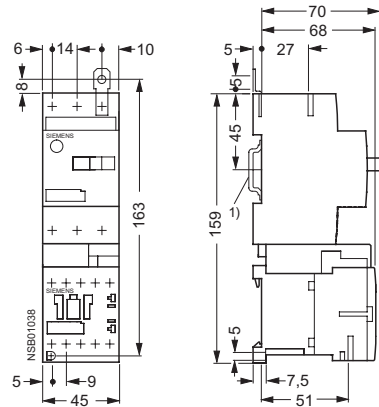
Dimensional drawings

3RA fuseless load feeders

Size S00 · For standard rail mounting

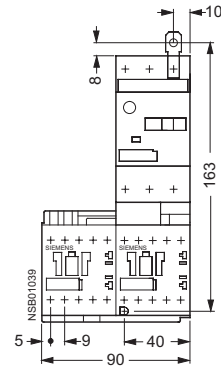
3RA11 10-. . A . .

Direct start



3RA12 10-. . A . .

Reversing duty

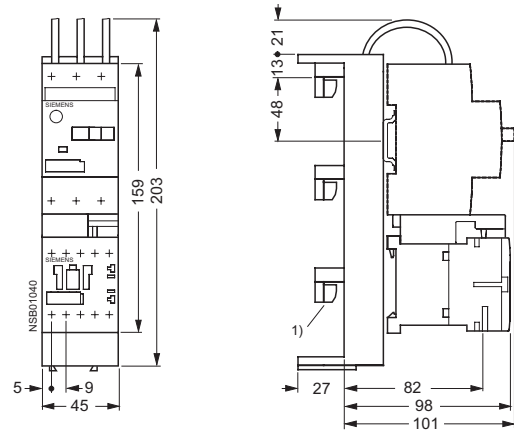


Size S00 · For 40 mm and 60 mm busbar systems

3RA11 10-. . C . .

3RA11 10-. . D . .

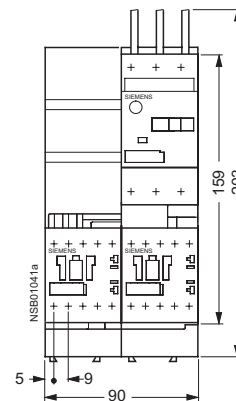
Direct start



3RA12 10-. . C . .

3RA12 10-. . D . .

Reversing duty



1) Busbar adapters suitable for a busbar thickness of 5 and 10 mm with chamfered edges.

3RA Fuseless Load Feeders

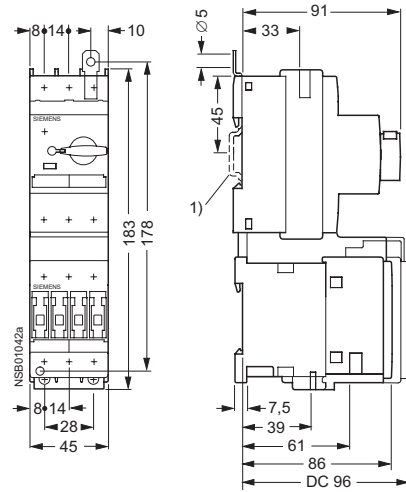
Direct-On-Line Starters, Reversing Starters, Accessories and Infeed System

Project planning aids

Size S0 · For standard rail mounting

3RA11 20-. . A . .

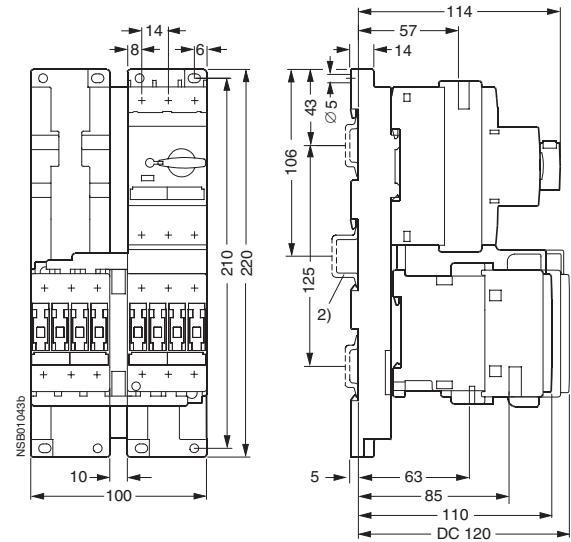
Direct start



- 1) Mounting with one TH 35 standard mounting rail according to EN 60715
Depth: 7.5 or 15 mm.

3RA12 20-. . A . .

Reversing duty



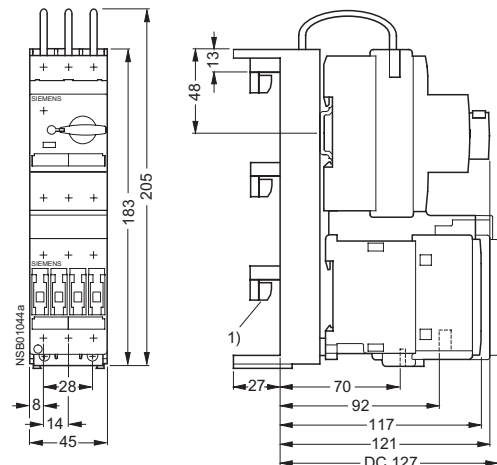
- 2) Alternative mounting methods
a)
Two TH 35 standard mounting rails according to EN 60715
Distance: 125 mm
Depth: 7.5 or 15 mm.
b)
One TH 35 standard mounting rail according to EN 60715
Depth: 15 mm.

Size S0 · For 40 mm and 60 mm busbar systems

3RA11 20-. . C . .

3RA11 20-. . D . .

Direct start

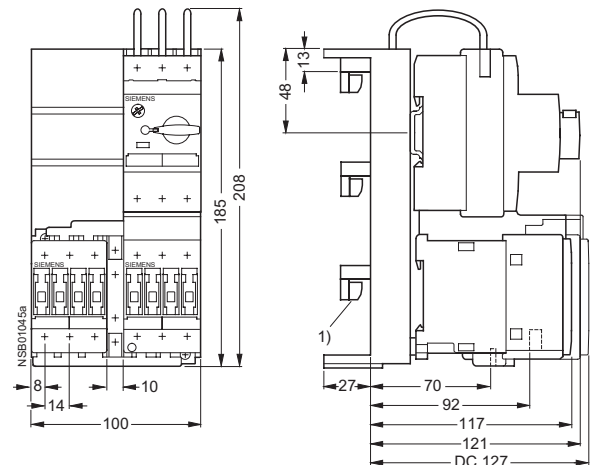


- 1) Busbar adapters suitable for a busbar thickness of 5 and 10 mm with chamfered edges.

3RA12 20-. . C . .

3RA12 20-. . D . .

Reversing duty



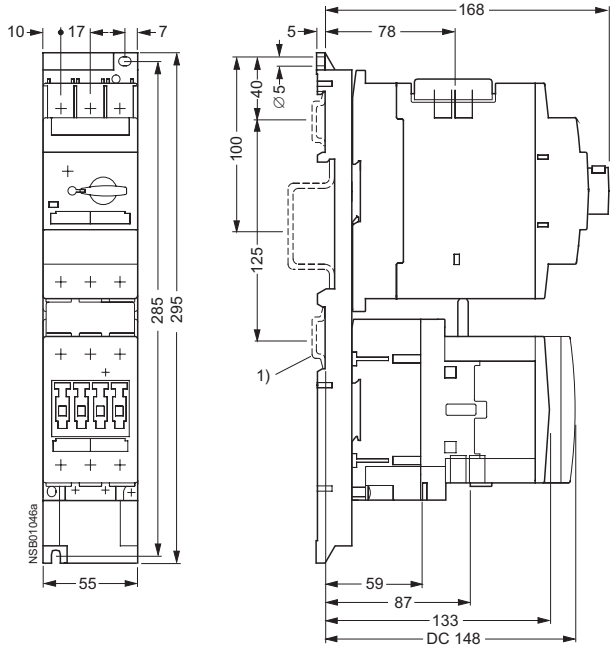
3RA Fuseless Load Feeders

Direct-On-Line Starters, Reversing Starters, Accessories and Infeed System

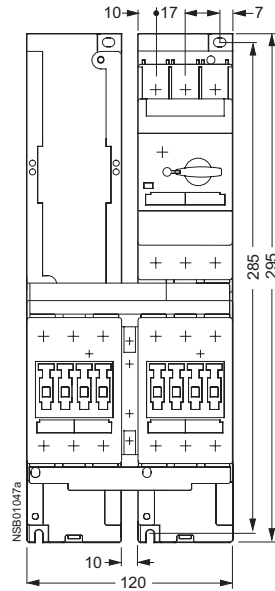
Project planning aids

Size S2 · For standard rail mounting

Direct start



Reversing duty

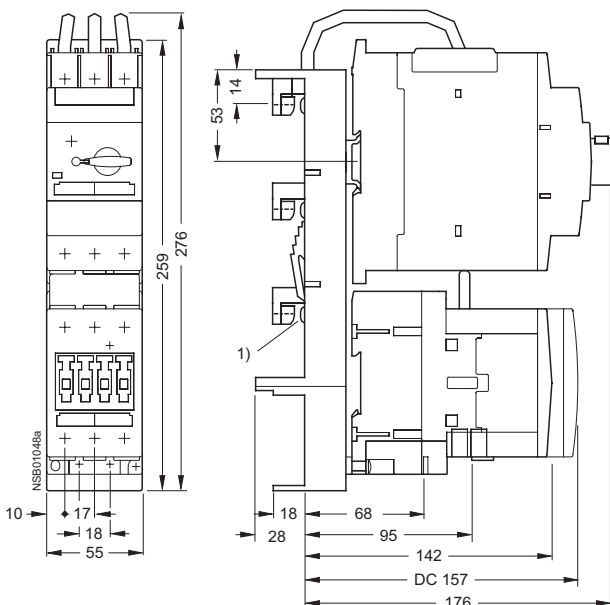


1) Alternative mounting methods

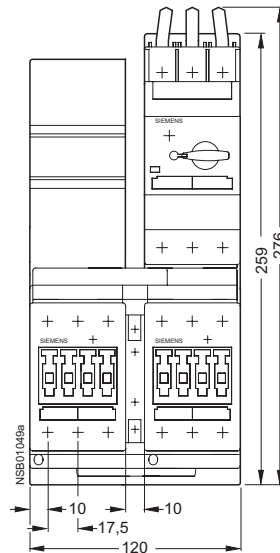
- a) Two TH 35 standard mounting rails according to EN 60715
Distance: 125 mm
Depth: 7.5 or 15 mm.
- b) One TH 75 standard mounting rail according to EN 60715
Depth: 15 mm.

Size S2 · For 40 mm and 60 mm busbar systems

Direct start



Reversing duty



1) Busbar adapters suitable for a busbar thickness of 5 and 10 mm with chamfered edges.

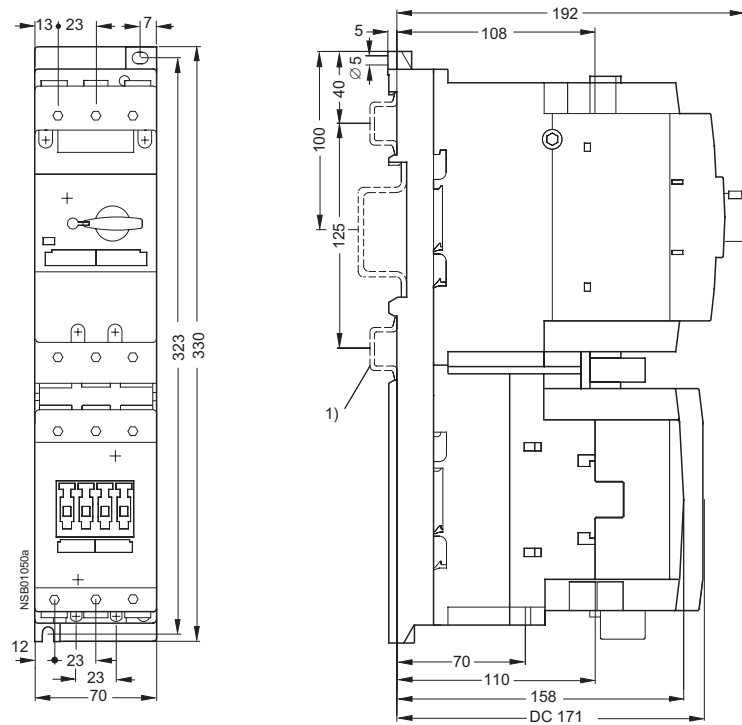
3RA Fuseless Load Feeders

Direct-On-Line Starters, Reversing Starters, Accessories and Infeed System

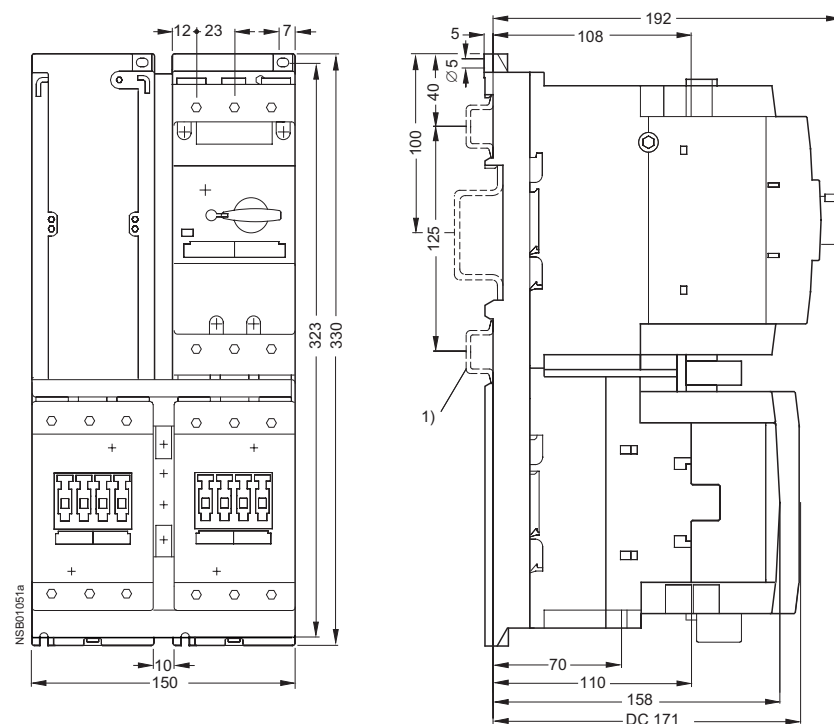
Project planning aids

Size S3 · For standard rail mounting

Direct start



Reversing duty



1) Alternative mounting methods

- a) Two TH 35 standard mounting rails according to EN 60715
Distance: 125 mm
Depth: 7.5 or 15 mm.
- b) One TH 75 standard mounting rail according to EN 60715
Depth: 15 mm.